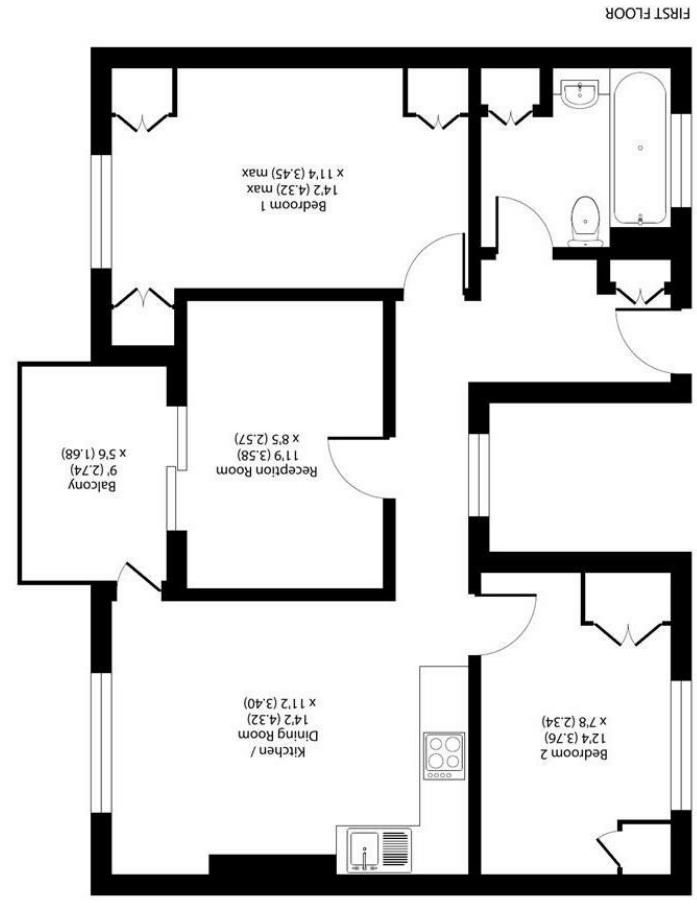


**Important Information**  
 All appliances listed in these details are only 'as seen' and have not been tested by Gibson Lane, nor have we sought certification of warranty or service, unless otherwise stated. Measurements, areas and distances are approximate. Floor plans and photographs are for guidance purposes only and must not be relied upon for any purpose. These details are offered on the understanding that all negotiations are made through this company. Neither these particulars, nor verbal representations, form part of any offer or contract, and their accuracy cannot be guaranteed.

Category	Rating
Energy Efficiency Rating	B
Environmental Impact (CO <sub>2</sub> ) Rating	C

RICS Property Measurement  
 Certified  
 Floor plan produced in accordance with RICS Property Measurement Standards incorporating International Property Measurement Standards (IPMS) (Revision 1), © December 2022. (Ref: 809061)

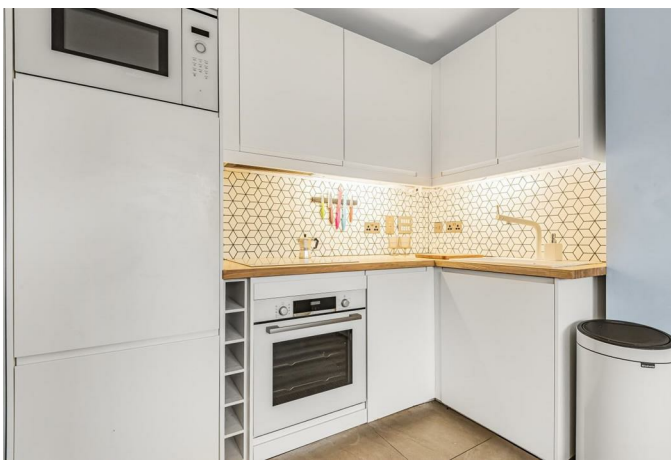


Approximate Area = 655 sq ft / 61 sq m  
 For identification only - Not to scale

34 Richmond Road  
 Kingston upon Thames  
 Surrey  
 KT2 5ED  
 www.gibsonlane.co.uk  
 Tel: 020 8546 5444



**Tudor Court, Tudor Road**  
 Kingston Upon Thames KT2 6AT



## Tudor Court, Tudor Road

Kingston Upon Thames KT2 6AT

Guide Price £375,000

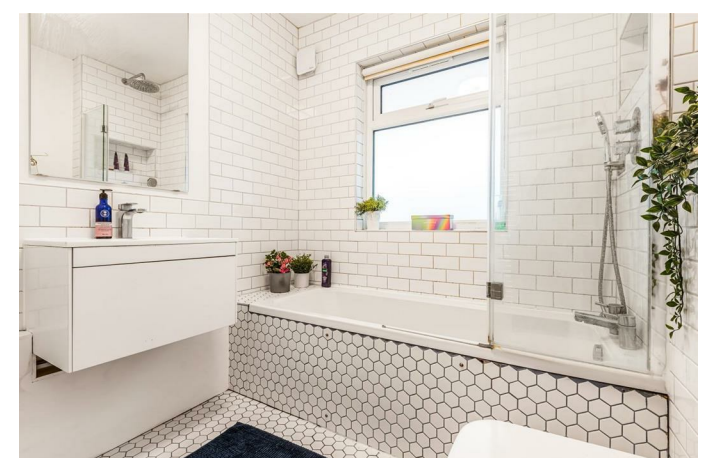
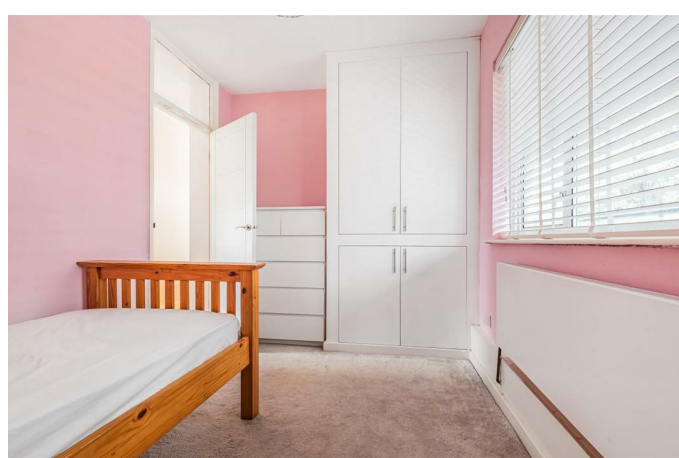
Situated on the desirable Tudor Road, moments away from Richmond park, is this large 2 double bedroom first floor flat.

### Description

Situated on the desirable Tudor Road, moments away from Richmond park, is this large 2 double bedroom first floor flat. Just over 665 sq. ft, this generously proportioned flat boasts a large reception room, with enough room for dining space, a private balcony looking out to communal gardens, open plan kitchen and a bathroom. A separate lounge offers the added possibility of a 3rd bedroom. Viewings are highly recommended to see what this property has to offer.

### Situation

Tudor Court is located on Tudor Road, a quiet residential street moment close to Richmond Park, Norbiton and Kingston Station, as well as a selection of Ofsted Outstanding local schools.



**Tenure:** Leasehold  
**Local Authority:** Kingston upon Thames